



Series 1000

- All Series 1000 door pulls are 316 Grade Stainless Steel with a satin finish

Pull Handle Accessories:

- Stainless steel studs for back-to-back fixing of total length 50mm (2 pcs.). (Shorter or longer length studs available, if required.)
- AISI 316 Grade Stainless Steel washers (4 pcs.)
- Specially developed clear PVC washers (4 pcs.)
- 6 or 8mm high tension grub bolts (2 pcs.). (6mm for 19, 22 or 25mm Ø & 8mm for over 25mm Ø)
- 3 or 4mm Allen key (as per size of grub bolts used)

Technical Specifications and

Benefits of Series 1000 Pull Handles:

- Specially designed PVC washers make fixing airtight.
- AISI 316 steel washers protect glass.
- Specially designed nickel-zinc plated high tension steel (TVS/UNBRAKO) studs / bolts / screws / grub screws.
- Matching degree of groove in stud and cone-shape of grub screw eliminate gaps between washer and glass once the grub screw is tightened.
- 6mm grub screws used for better back-to-back fixing.
- Graded & extruded brass bushing used for proper grip.
- Brass bushings are long to accommodate more thread, thus giving more strength. Bushing is also fixed to the pipe wall by a small pin.

Benefits of Using AISI 316 Grade Stainless Steel

Raw Material:

- Pull Handles are made of AISI 316 Grade Stainless Steel (instead of normally used 304 grade steel).
- Stainless Steel 316 Grade provides optimum strength and protection against corrosion.

Maintenance:

- Clean using soap and water or silicon-free stainless steel cleaner. Do not use abrasive agents or harsh chemicals. Provide plastic sheet protection for all surfaces of completed installations to prevent damage during remainder of construction activities.

HDI Series 1000

Information



HDI 1001



Standard Dimensions				
Item	A	B	C	D
1001-1	7-7/8"	6-13/16"	1-1/16"	3-3/8"
1001-2	14-13/16"	13-3/4"	1-1/16"	3-3/8"
1001-3	23-9/16"	22-1/2"	1-1/16"	3-1/8"

- HDI straight 316 stainless steel pull handle with curved end returns. Available in a brushed finish.
- Please advise size option, fastening type, and door thickness when ordering.



HDI 1002

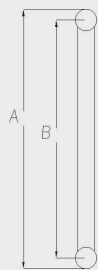


Standard Dimensions				
Item	A	B	C	D
1002-1	9-5/16"	8-1/4"	7/8"	3-1/8"
1002-2	14-13/16"	13-3/4"	1"	3-1/8"

- HDI straight 316 stainless steel pull handle with mitered end returns. Available in a brushed finish.
- Please advise size option, fastening type and door thickness when ordering.



HDI 1003



Standard Dimensions				
Item	A	B	C	D
1003-1	9-1/2"	8-1/4"	1"	3-1/8"
1003-2	15-1/16"	13-3/4"	1"	3-1/8"

- HDI straight 316 stainless steel pull handle with straight end returns. Available in a brushed finish.
- Please advise size option, fastening type and door thickness when ordering.

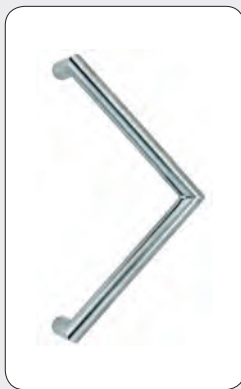


HDI 1004

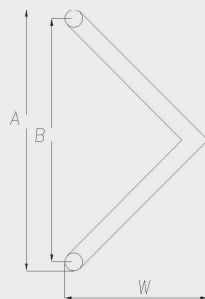


Standard Dimensions				
Item	A	B	C	D
1004-1	10-1/2"	7-1/8"	1-1/4"	3-3/8"
1004-2	15-3/4"	12-3/8"	1-1/4"	3-3/8"
1004-3	36-5/8"	33-1/4"	1-1/4"	3-3/8"

- HDI straight 316 stainless steel pull handle with capped ends and straight supports. Available in a brushed finish.
- Please advise size option, fastening type and door thickness when ordering.



HDI 1006

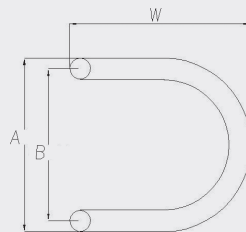


Standard Dimensions					
Item	A	B	C	D	W
1006-1	9-1/4"	8-1/4"	1"	3-1/8"	5-5/16"
1006-2	14"	13"	1"	3-1/8"	7-11/16"

- HDI angled 316 stainless steel pull handle with mitered end returns. Available in a brushed finish.
- Please advise size option, fastening type and door thickness when ordering.



HDI 1007



Standard Dimensions					
Item	A	B	C	D	W
1007	9-7/16"	8-1/4"	1-1/4"	3-5/16"	10"

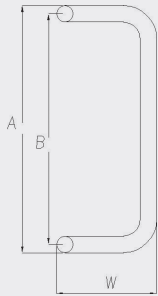
- HDI stainless 316 steel pull handle with curved end returns. Available in a brushed finish.
- Please advise fastening type and door thickness when ordering.

HDI Series 1000

Information



HDI 1008

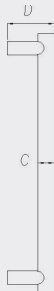
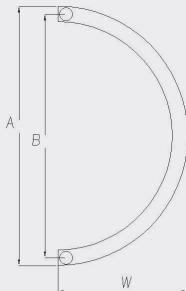


Standard Dimensions					
Item	A	B	C	D	W
1008-1	9-1/4"	8-1/4"	1"	3-1/8"	6"
1008-2	14-3/4"	13-3/4"	1"	3-1/8"	6"
1008-3	24-1/2"	23-1/2"	1"	3-1/8"	6"

- HDI straight 316 stainless steel pull handle with curved end returns. Available in a brushed finish.
- Please advise size option, fastening type and door thickness when ordering.



HDI 1009



Standard Dimensions					
Item	A	B	C	D	W
1009-1	9-3/16"	8-1/4"	1"	3"	4"
1009-2	16-3/4"	15-3/4"	1"	3"	8-3/8"

- HDI curved 316 stainless steel pull handle with with capped ends and straight supports. Available in a brushed finish.
- Please advise size option, fastening type and door thickness when ordering.



HDI 1010

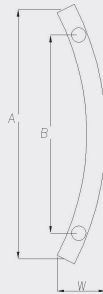


Standard Dimensions					
Item	A	B	C	D	W
1010	12-1/4"	11-1/4"	1"	2-11/16"	4"

- HDI curved 316 stainless steel pull handle with mitered end returns. Available in a brushed finish.
- Please advise fastening type and door thickness when ordering.



HDI 1012



Standard Dimensions					
Item	A	B	C	D	W
1012	14"	11"	1"	2-1/4"	2-11/16"

- HDI curved 316 stainless steel pull handle with capped ends and straight supports. Available in a brushed finish.
- Please advise fastening type and door thickness when ordering.



HDI 1013



Standard Dimensions					
Item	A	B	C	D	W
1013	14"	9-1/16"	1"	2-1/2"	3-1/4"

- HDI straight 316 stainless steel pull handle with capped ends and curved supports. Available in a brushed finish.
- Please advise fastening type and door thickness when ordering.



HDI 1014



Standard Dimensions					
Item	A	B	C	D	W
1014	14"	9-1/16"	1"	2-7/16"	3-1/4"

- HDI straight 316 stainless steel pull handle with capped ends and mitered supports. Available in a brushed finish.
- Please advise fastening type and door thickness when ordering.

HDI Series 1000

Information



HDI 1017



Standard Dimensions					
Item	A	B	C	D	W
1017	16-7/8"	15-1/2"	1-5/16"	3-1/4"	4-1/2"

- HDI straight 316 stainless steel pull handle with mitered ends and returns. Available in a brushed finish.
- Please advise fastening type and door thickness when ordering.