



Series 2000

- All Series 2000 door pulls are 304 Grade Stainless Steel
- Satin and polished finishes available as well as pearwood, black walnut, and natural stone accents

Pull Handle Accessories:

- Cylindrical neoprene washer (2 pcs.)
- Allen wrench (sized as determined by each individual pull)
- Finishing buttons available for single-sided applications

Benefits of Series 2000 Door Pulls:

- Sleek contemporary look
- Minimalist designs
- Low-maintenance stainless steel
- Elegant material combination: stainless steel and wood; or stainless steel and stone.

Maintenance:

- Clean using soap and water or silicon-free stainless steel cleaner. Do not use abrasive agents or harsh chemicals. Provide plastic sheet protection for all surfaces of completed installations to prevent damage during remainder of construction activities.

HDI Series 2000

Information



HDI 2424



Standard Dimensions				
Item	A	B	C	D
2424	23-5/8"	22-1/8"	1-1/2"	3-3/8"

- HDI straight 304 stainless steel pull handle with straight supports. Available in a polished finish with a brushed grip.
- Please advise fastening type and door thickness when ordering.



HDI 2471



Standard Dimensions				
Item	A	B	C	D
2471	24-7/16"	22-15/16"	1-1/2"	3-1/8"

- HDI straight 304 stainless steel pull handle with curved ends and straight supports. Available in a polished finish with a brushed grip, polished rings at grip.
- Please advise fastening type and door thickness when ordering.



HDI 2452



Standard Dimensions					
Item	A	B	C	D	W
2452	16-15/16"	15-11/16"	1-1/4"	3"	2-7/16"

- HDI curved 304 stainless steel pull handle with straight supports. Available in a polished finish with a brushed grip, polished rings at grip.
- Please advise fastening type and door thickness when ordering.



HDI 2430



Standard Dimensions				
Item	A	B	C	D
2430	19-11/16"	16-15/16"	1-1/2"	3-1/16"

- HDI straight 304 stainless steel pull handle with capped ends and straight supports. Available in a brushed finish.
- Please advise fastening type and door thickness when ordering.



HDI 2441



Standard Dimensions				
Item	A	B	C	D
2441	17-11/16"	11-13/16"	1-1/4"	2-15/16"

- HDI straight 304 stainless steel pull handle with capped ends and straight supports. Available in a brushed finish with polished supports.
- Please advise fastening type and door thickness when ordering.



HDI 2442



Standard Dimensions				
Item	A	B	C	D
2442	23-5/8"	22-3/8"	1-1/4"	3-1/8"

- HDI straight 304 stainless steel pull handle with mitered end returns. Available in a brushed finish with polished ends.
- Please advise fastening type and door thickness when ordering.

HDI Series 2000

Information



HDI 2443



Standard Dimensions				
Item	A	B	C	D
2443	17-11/16"	16-3/4"	1-1/2"	3-1/8"

- HDI straight 304 stainless steel pull handle with mitered ends returns. Available in a brushed finish with polished ends.
- Please advise fastening type and door thickness when ordering.



HDI 2449



Standard Dimensions				
Item	A	B	C	D
2449	17-11/16"	16-3/4"	1"	2-15/16"

- HDI curved 304 stainless steel pull handle with curved end returns. Available in a brushed finish with polished ends.
- Please advise fastening type and door thickness when ordering.



HDI 2450

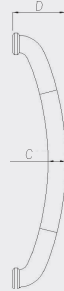


Standard Dimensions				
Item	A	B	C	D
2450	21-5/8"	15-3/4"	1-1/4"	3-1/16"

- HDI curved 304 stainless steel pull handle with capped ends and straight supports. Available in a polished finish.
- Please advise fastening type and door thickness when ordering.



HDI 2453

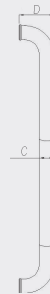


Standard Dimensions				
Item	A	B	C	D
2453	17-11/16"	16-7/16"	1-1/4"	3-5/8"

- HDI curved 304 stainless steel pull handle with curved end returns. Available in a brushed finish with polished ends.
- Please advise fastening type and door thickness when ordering.



HDI 2456

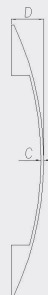


Standard Dimensions				
Item	A	B	C	D
2456	24"	22-3/4"	1-1/4"	3-1/16"

- HDI angled 304 stainless steel pull handle with curved end returns. Available in a brushed finish with polished ends.
- Please advise fastening type and door thickness when ordering.



HDI 2473

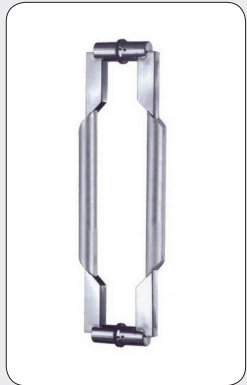


Standard Dimensions				
Item	A	B	C	D
2473	23-5/8"	17-11/16"	1/4"	2-3/4"

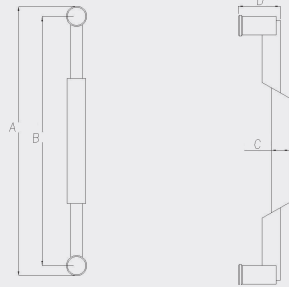
- HDI curved 304 stainless steel pull handle. Available in a brushed finish.
- Please advise fastening type and door thickness when ordering.

HDI Series 2000

Information



HDI 2476

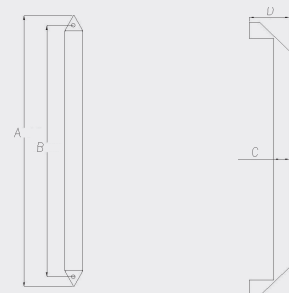


Standard Dimensions				
Item	A	B	C	D
2476	21-5/8"	20-1/4"	1-1/2"	3-7/16"

- HDI straight and segmented 304 stainless steel pull handle with straight supports. Available in a brushed finish.
- Please advise fastening type and door thickness when ordering.



HDI 2478

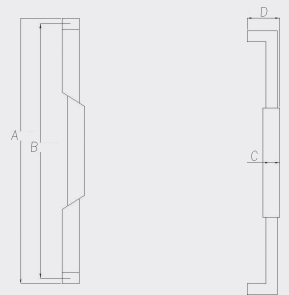


Standard Dimensions				
Item	A	B	C	D
2478	23-5/8"	21-7/8"	1-9/16"	3-1/16"

- HDI straight 304 stainless steel pull handle with formed end returns. Available in a brushed finish with polished ends.
- Please advise fastening type and door thickness when ordering.



HDI 2477

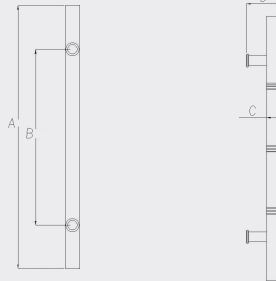


Standard Dimensions				
Item	A	B	C	D
2477	23-5/8"	22-5/8"	1-1/2"	2-13/16"

- HDI straight and segmented 304 stainless steel pull handle with mitered end returns. Available in a brushed finish with polished ends.
- Please advise fastening type and door thickness when ordering.

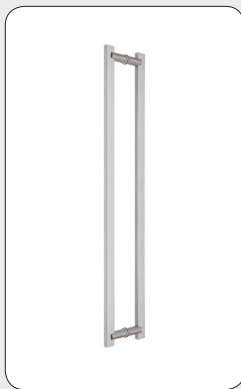


HDI 2435

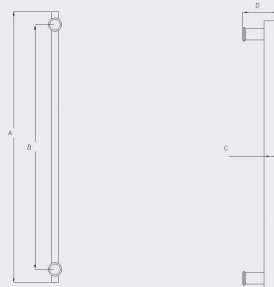


Standard Dimensions				
Item	A	B	C	D
2435	23-5/8"	15-3/4"	1-1/4"	3-1/16"

- HDI straight 304 stainless steel pull handle with capped ends and straight supports. Available in a brushed finish with polished rings at grip.
- Please advise fastening type and door thickness when ordering.

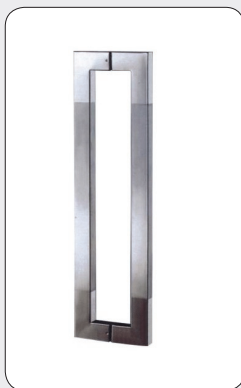


HDI 2427

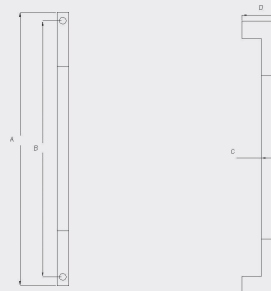


Standard Dimensions				
Item	A	B	C	D
2427-1	11-13/16"	9-5/8"	1-3/16"	3-1/16"
2427-2	23-5/8"	21-1/4"	1-3/16"	3-1/16"

- HDI straight 304 stainless steel pull handle with capped ends and straight supports. Available in a brushed finish.
- Please advise size option, fastening type and door thickness when ordering.



HDI 2484

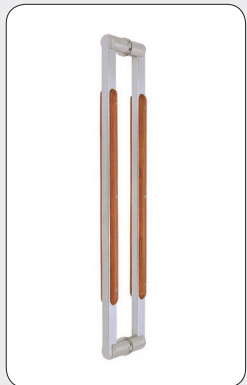


Standard Dimensions				
Item	A	B	C	D
2484-1	23-5/8"	22-1/8"	1-1/2"	3-1/8"
2484-2	31-1/2"	31"	1-1/2"	3-1/8"

- HDI straight 304 stainless steel pull handle with mitered end returns. Available in a brushed finish.
- Please advise size option, fastening type and door thickness when ordering.

HDI Series 2000

Information



HDI 2602



Standard Dimensions				
Item	A	B	C	D
2602	23-5/8"	22-7/16"	1-3/16"	3-1/4"

- HDI straight 304 stainless steel pull handle with capped ends and straight supports. Available in a brushed finish with pearwood or black walnut grip.
- Please advise fastening type and door thickness when ordering.